



# AQUELLA

BEACH • COUNTRY CLUB • GOLF

 Pacific Century  
Premium Developments



PINETREE RESIDENCE CO., LTD

All furniture and landscaping items depicted in the graphic(s) above are for reference only and are subject to changes without notice. Furniture are not included in the purchase of the villa and are subject to a separate sale and purchase agreement.

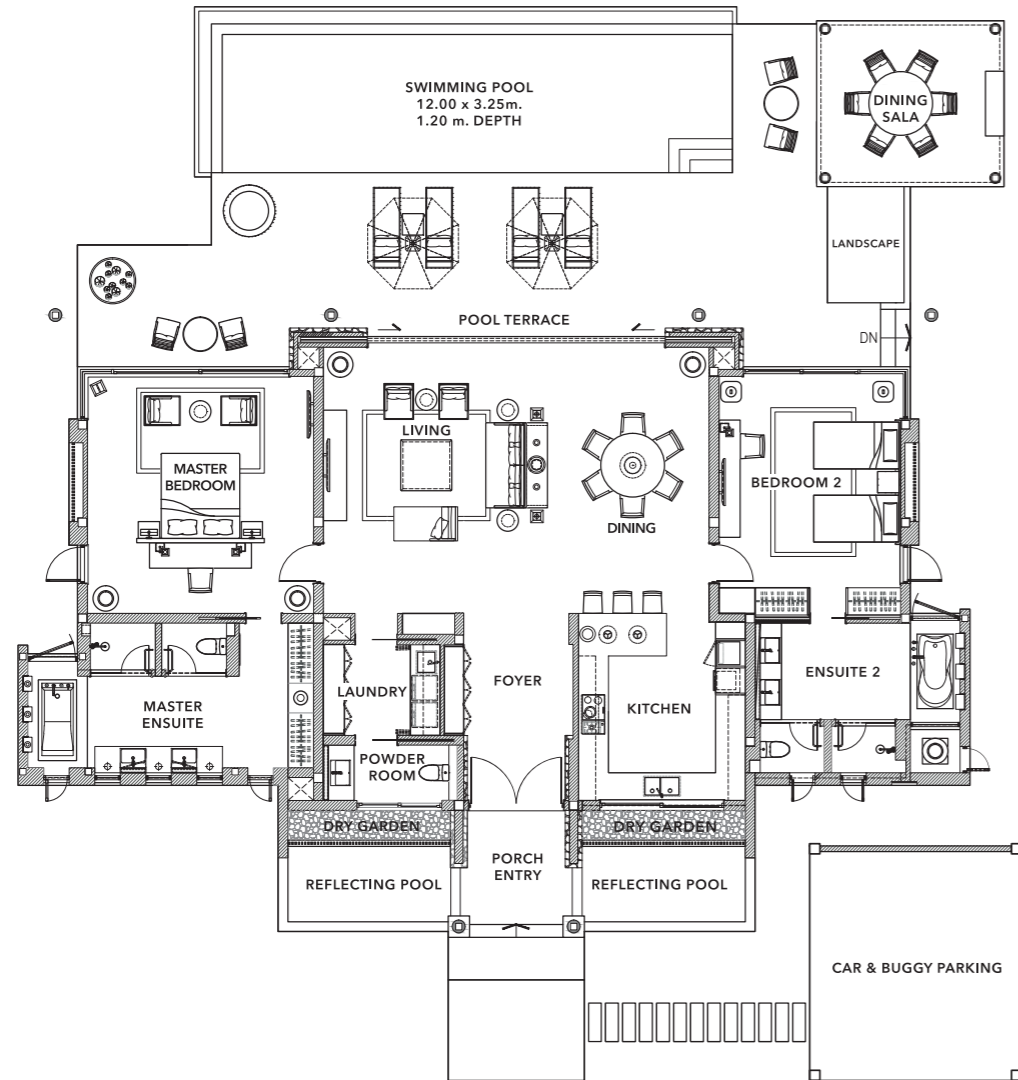
Copyright ©2020 Pinetree Residence Co., Ltd. All rights reserved. Any descriptions herein are for illustration purposes only and may be subject to a further change or revision without notice. You are advised not to rely on such description. Should you have any inquiries or question, please consult your own sales personnel or relevant professionals. No representation or warranty, express or implied, is made herein and no reliance should be placed on the accuracy, fairness or completeness of any messages or information presented herein. This material does not constitute an offer or invitation to subscribe for or purchase any assets, and nothing contained herein shall form the basis of any contract or commitment whatsoever. If there is any discrepancy or conflict between the English version of this document and a version in a language other than English, the English version shall prevail.

All information shall be subject to the Agreement for Sale and Purchase for the development. The Developer and the Seller reserve the right to cancel or make any changes or modifications to the project development and its layout plan; the building / villa design, specifications, features, floor plans, layout, materials; the timing for the development of the project; the availability or intended use of all facilities or services within the development; or any aspect of the development without prior notice. The facilities and services intended to be available within the development (such as the golf club, golf course, the spa, the country club, tennis and fitness facilities, trails and restaurants) may not be available immediately upon the date of occupation. All information given in this sales material is subject to the final plans as approved by the government and the relevant authorities; and the legal documents that are applicable to this development. Certain planned facilities and services may be subject to governmental consents or licences. Terms and conditions apply to all the services/facilities mentioned in this sales material.

Printed in: September 2020

TWO-BEDROOM VILLAS

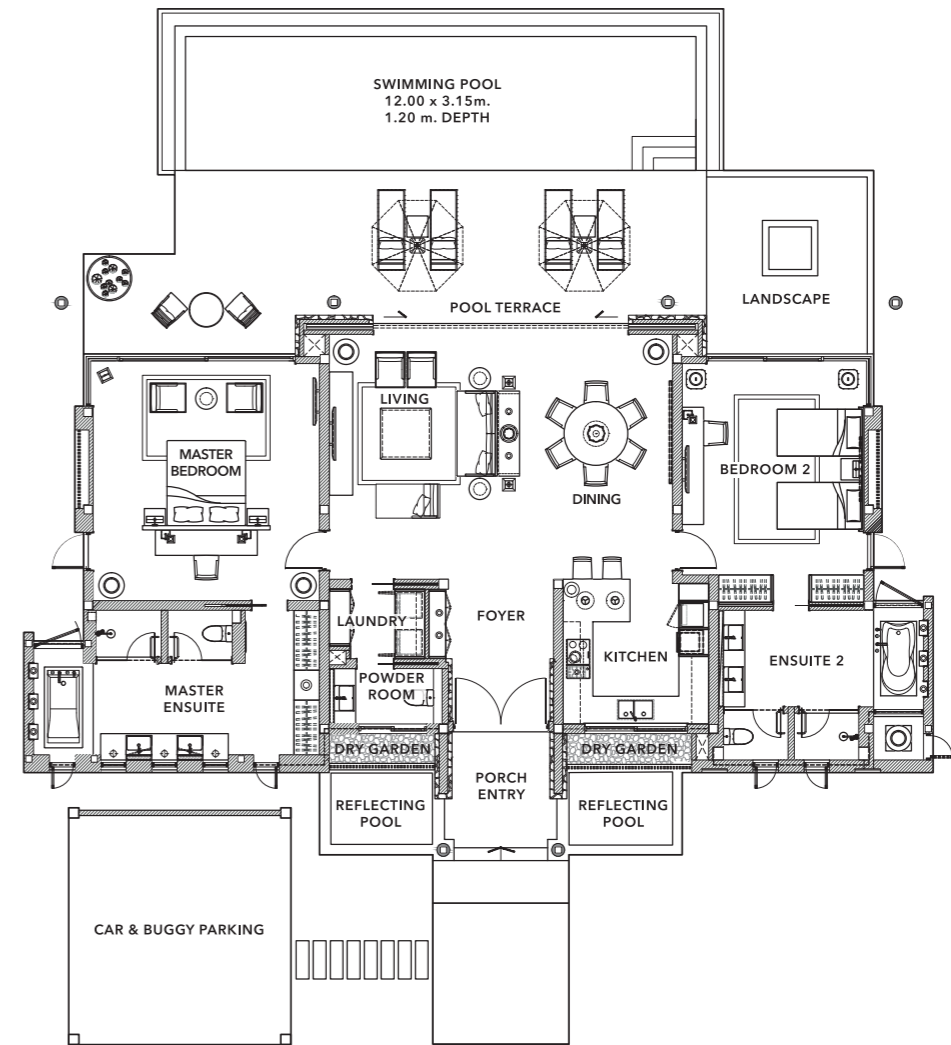
# GRAND TWO-BEDROOM VILLA



## GRAND TWO-BEDROOM VILLA

Enclosed Area: <b>217sq.m</b>	Covered Area: <b>59sq.m</b>	Non-Covered Area: <b>154sq.m</b>	Total: <b>430sq.m</b>
----------------------------------	--------------------------------	-------------------------------------	--------------------------

# TWO-BEDROOM VILLA



## TWO-BEDROOM VILLA

Enclosed Area: <b>190sq.m</b>	Covered Area: <b>40sq.m</b>	Non-Covered Area: <b>138sq.m</b>	Total: <b>368sq.m</b>
----------------------------------	--------------------------------	-------------------------------------	--------------------------